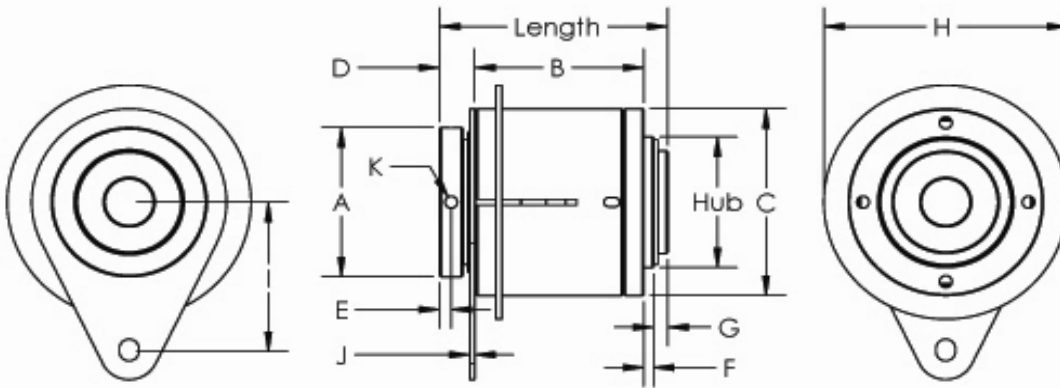


# AD200B



## Tiny-Clutch AD200B AD-Series Autodisconnect Clutch

Specifications:		Options:		
<b>Max Torque</b>	350 in/lbs		9/16", 5/8", 11/16", 3/4", 13/16, 7/8",	
<b>Length</b>	2.93 in		15/16", 1", 1 1/16", 1 1/8", 15mm,	
<b>Hub</b>	1.75 in		16mm, 17mm, 18mm, 19mm, 20mm,	
<b>Dimension A</b>	2.00 in		21mm, 22mm, 23mm, 24mm, 25mm,	
<b>Dimension B</b>	2.15 in		26mm, 27mm, 28mm	
<b>Dimension C</b>	2.50 in		<b>Bore</b>	Set Screw, CrossHole,
<b>Dimension D</b>	0.45 in			Set Screw & Cross Hole,
<b>Dimension E</b>	0.15 in		<b>Mounting</b>	Keyway w/ Set Screw
<b>Dimension F</b>	0.12 in		<b>Drive</b>	Clockwise, Counter Clockwise
<b>Dimension G</b>	0.18 in		<b>Input</b>	Hub, Shaft
<b>Dimension H</b>	3.13 in		<b>Hub Type</b>	4 Hole Drum
<b>Dimension I</b>	2.00 in			
<b>Dimension J</b>	0.06 in			

Tiny-Clutch | Helander Products, Inc.