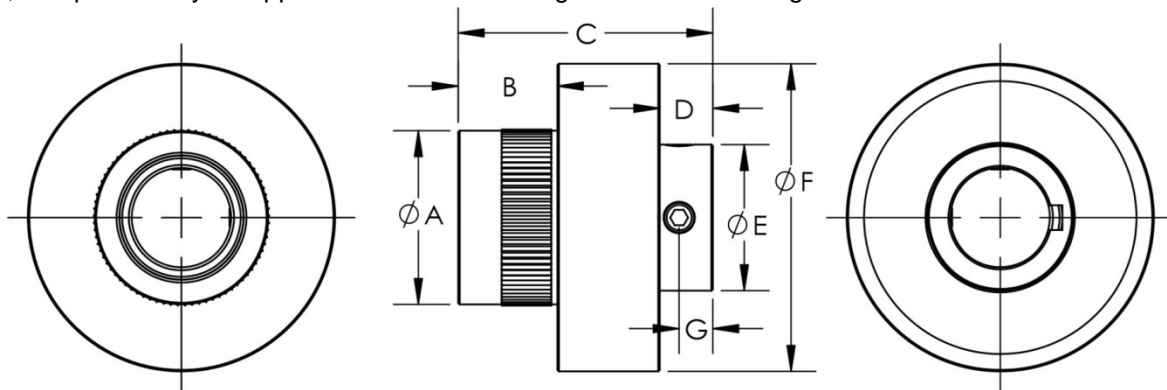


2866-RH Roller Clutch 2866-LH Roller Clutch

The Tiny-Clutch 2866 overrunning roller clutch is a miniature roller and cam type one-way clutch from our D-Series line of clutches. The D-Series clutches are most frequently used to allow a driven member to overrun the input, or for backstopping a load, they can also function to convert oscillating motion to rotary motion. These clutches use our proven cam and roller principle for long life with trouble free performance. The cam, housing and rollers are made of hardened steel and each roller is energized by a spring which is held square and centered in a drilled pocket. The design of the clutch allows for near zero backlash as well as high free-wheeling speeds. The clutch will not jam in the free direction.

The 2866 overrunning roller clutch is based on our D125 roller clutch. The knurled hub on the housing allows installation of a pulley, gear or sprocket. This clutch has a 1/2 inch (12.7mm) bore, the cam is screwed and/or keyed to your shaft, and power may be applied to the clutch through either the housing or the cam.



Specifications:

Maximum Torque	50lbs-in 5.6Nm	Dimension B	.50in 12.7mm	Dimension E	.74in 18.7mm
Maximum Speed	2,000 RPM	Dimension C	1.28in 32.6mm	Dimension F	1.55in 39.3mm
Typical Weight	4.6oz 129g	Dimension D	.27in 6.8mm	Dimension G	.17in 4.3mm
Dimension A	.874in 22.2mm				

Mounting Specifications:

Bore	Set Screws	Keyway
1/2in 12.7mm	10-32 x 2	1/8in 3.2mm

Clutch Direction:

Right handed clutches drive clockwise and slip counter clockwise.
 Left handed clutches drive counter clockwise and slip clockwise.

We can provide a variety of adapter hubs or make one to your specifications to connect our clutch to your application.

